



Manufacturing Career Pathways

Over the past three years, the federal government has invested more than a billion dollars in the manufacturing industry's revitalization. The result is thousands of new advanced manufacturing jobs that offer challenging careers and long-term growth opportunities. Opportunity abounds with multiple pathways to these in-demand jobs.

Get started now.





HIGH SCHOOL INITIATIVES

Ascend

In partnership with the Chester County Technical College High Schools, the Ascend program guides students on a three-year journey to a future in advanced manufacturing through a collaboration with local employers.

High School Dual Enrollment

Dual Enrollment programs provide eligible high school students the opportunity to earn college credits at a fraction of the standard tuition rates and fees.

Early College

Early College increases and accelerates the pipeline of skilled workers ready for the region's high priority occupations by bolstering student access, retention and completion. Participating high school students:

- Attend college classes every day at one of the College's locations during their junior and senior years.
- Complete a certificate program.
- Position themselves to complete an Advanced Technology, Associate in Applied Science degree within one year after high school graduation.



COMMUNITY COLLEGE

Associate Degrees

Associate degree earners complete approximately 60 credits and typically must complete general education courses, core classes required for their major and electives. The College offers the following associate options:

- Associate of Art (A.A.), Associate of Science (A.S.) and Associate of Fine Art (A.F.A) degrees are transfer degrees for students planning on completing a college or university baccalaureate program.
- Associate in Applied Science (A.A.S.) degrees are career preparation degrees with an emphasis on career skills.

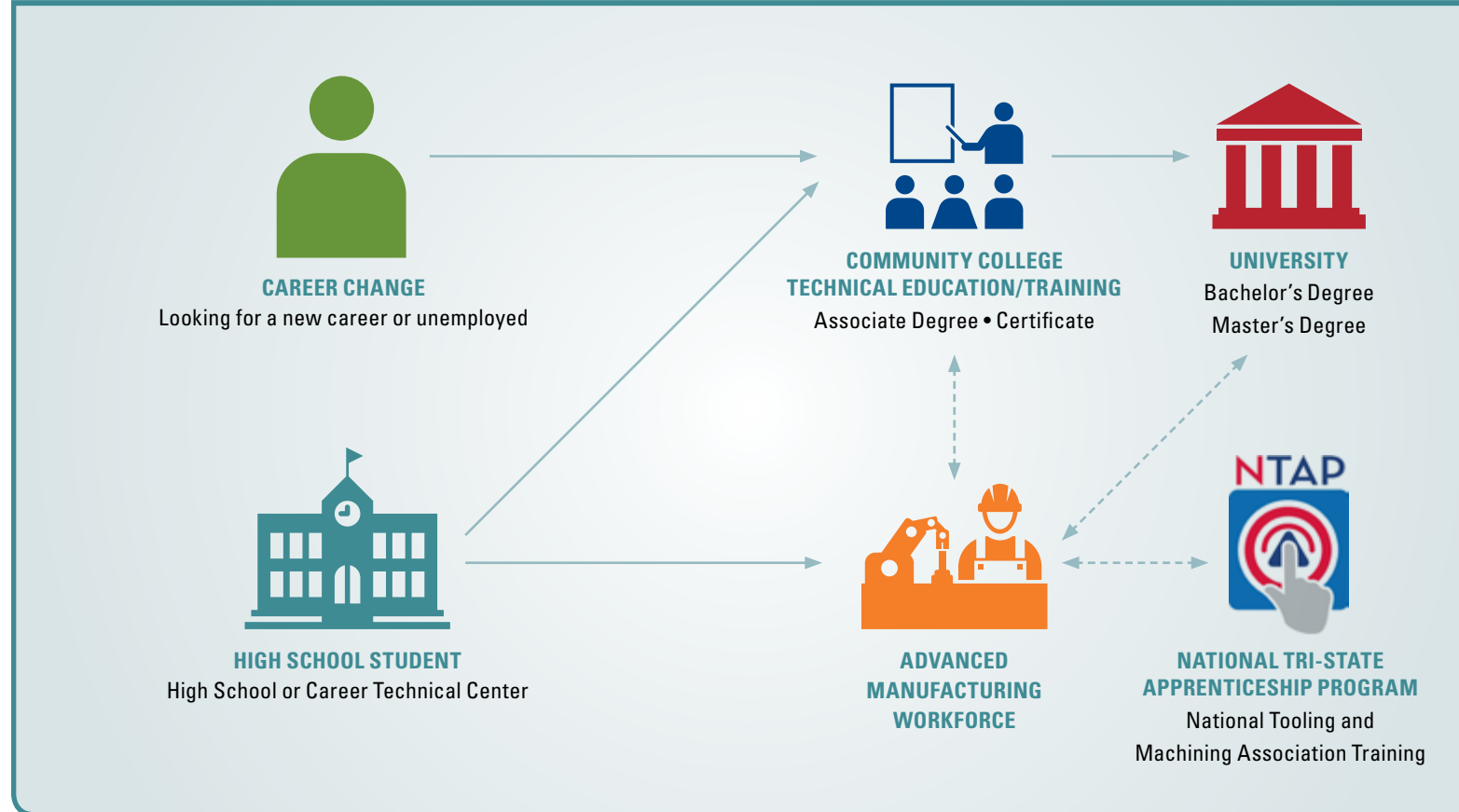
Certificates

Certificates are short-term workforce preparation or advancement programs offering post-secondary students the chance to earn a specialized credential in a relatively short period of time. A college-level certificate typically focuses on particular courses that directly relate to the student's chosen area of study and do not include general education classes.

Free Tuition Program

As a founding member of the Manufacturing Alliance of Chester and Delaware Counties, Delaware County Community College offers select manufacturing-related courses to employees of the Alliance's manufacturing members at a significant discount.

FIND YOUR PATH TO A HIGH-TECH, HIGH-PAYING MANUFACTURING CAREER



Contract Training

Delaware County Community College offers customized training and education to meet the needs of the business community. Courses, seminars and workshops are available on-site at a company or organization, at one of the College's locations or online.

Cooperative Education and Internships

Cooperative education provides students with unique opportunities to receive academic credit for hands-on work experience in their field of study.



UNIVERSITY

Transfer Options

Students interested in pursuing a bachelor's or master's degree will be interested in the College's transfer pathways. Dual admission agreements with select colleges and universities provide guaranteed admission to a particular bachelor's degree at the transfer institution while many also offer merit-based scholarship opportunities. A variety of other transfer options are also available.



NATIONAL TRI-STATE APPRENTICESHIP PROGRAM

The National Tri-state Apprenticeship Program (NTAP) is a regional, competency-based apprenticeship program offered by the National Tooling and Machining Association that trains students in the skills of Computer Numeric Control and Industrial Maintenance.



ADVANCED MANUFACTURING WORKFORCE

Regional employers look to technical schools, community colleges and universities to help fill the increasing gap in skilled workers. With the help of local workforce boards, the economic development council and industry partnerships, Delaware County Community College plays a vital role in the regional economy by educating and training a skilled workforce.

A variety of resources are available to those seeking a manufacturing career. Below are just a few.

Workforce Development Boards

Workforce development boards direct federal, state, and local funding to workforce programs while also overseeing the PA CareerLink centers.

HireONE

The success of any business or organization is its human capital. HireONE creates human capital by addressing the workforce and economic development needs of industry partners in the region.

PA CareerLink

PA CareerLink is a cost-effective opportunity for employers to recruit and retain workers throughout Pennsylvania. Job seekers can obtain employment information, find out about career development opportunities and connect to various local resources.

Manufacturing Alliance of Chester and Delaware Counties

The Manufacturing Alliance of Chester and Delaware Counties promotes the growth of the regional manufacturing industry by providing workforce and economic development services to partnering companies.



FOR MORE INFORMATION:
Contact Dr. Karen Kozachyn, Dean
 Workforce Development Division
 610-359-5362 | www.dccc.edu



www.dccc.edu

Delaware County Community College does not discriminate on the basis of race, color, national origin, religion, sex, disability, veteran status, sexual orientation or age in its programs and activities.

Delaware County Community College is accredited by the Middle States Association of Colleges and Schools, Commission on Higher Education, 3624 Market Street, Philadelphia PA 19104 (Phone: 267-284-5000, Email: info@msche.org).